

# Mill River Watershed Based Plan

March 15, 2018

Whitneyville Civic Association



# Mill River Watershed

25 square miles

17 miles long

5 Municipalities

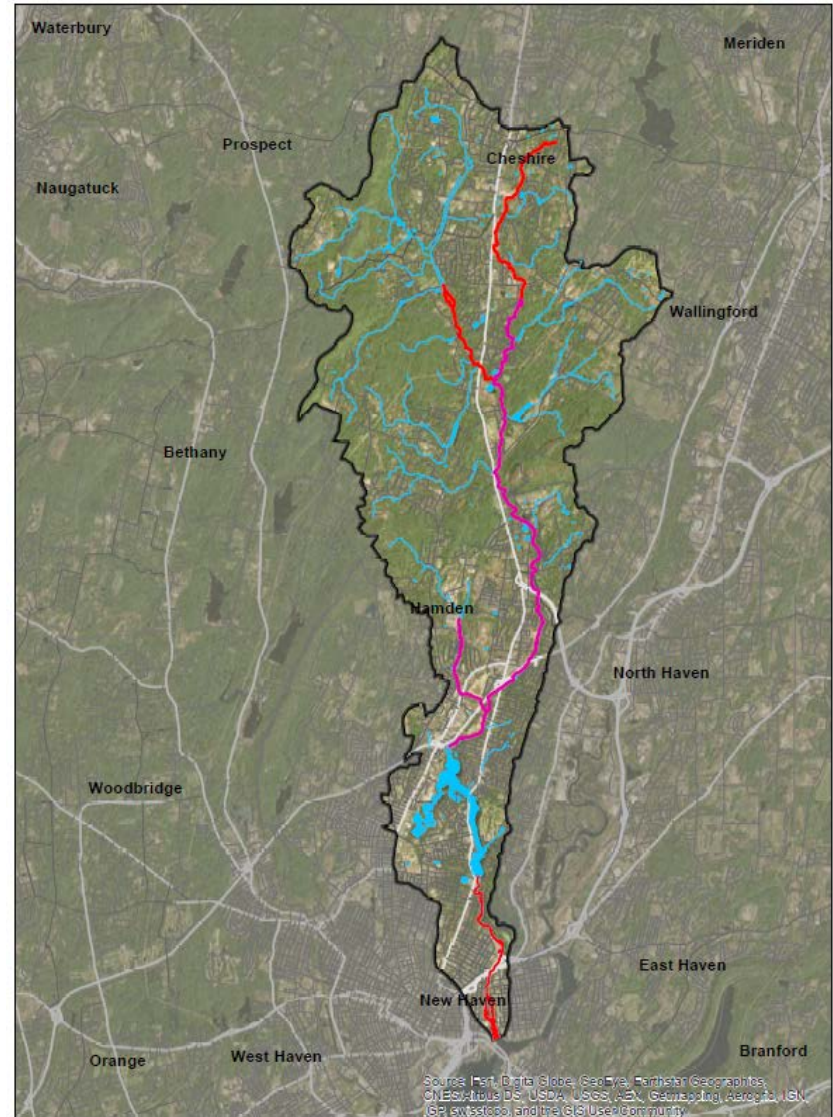
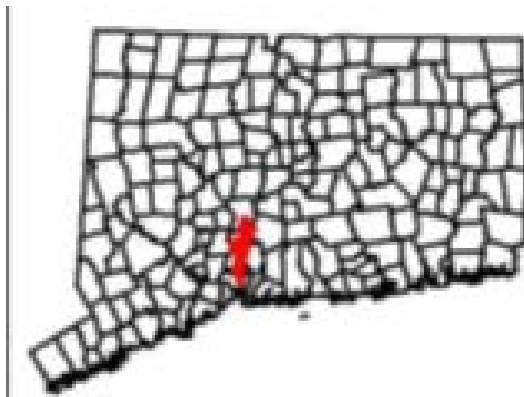
Cheshire

Hamden

North Haven

Wallingford

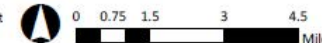
New Haven



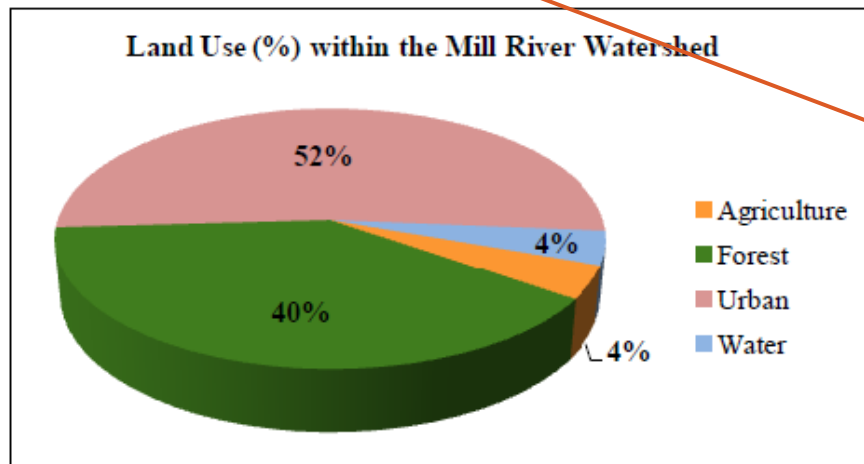
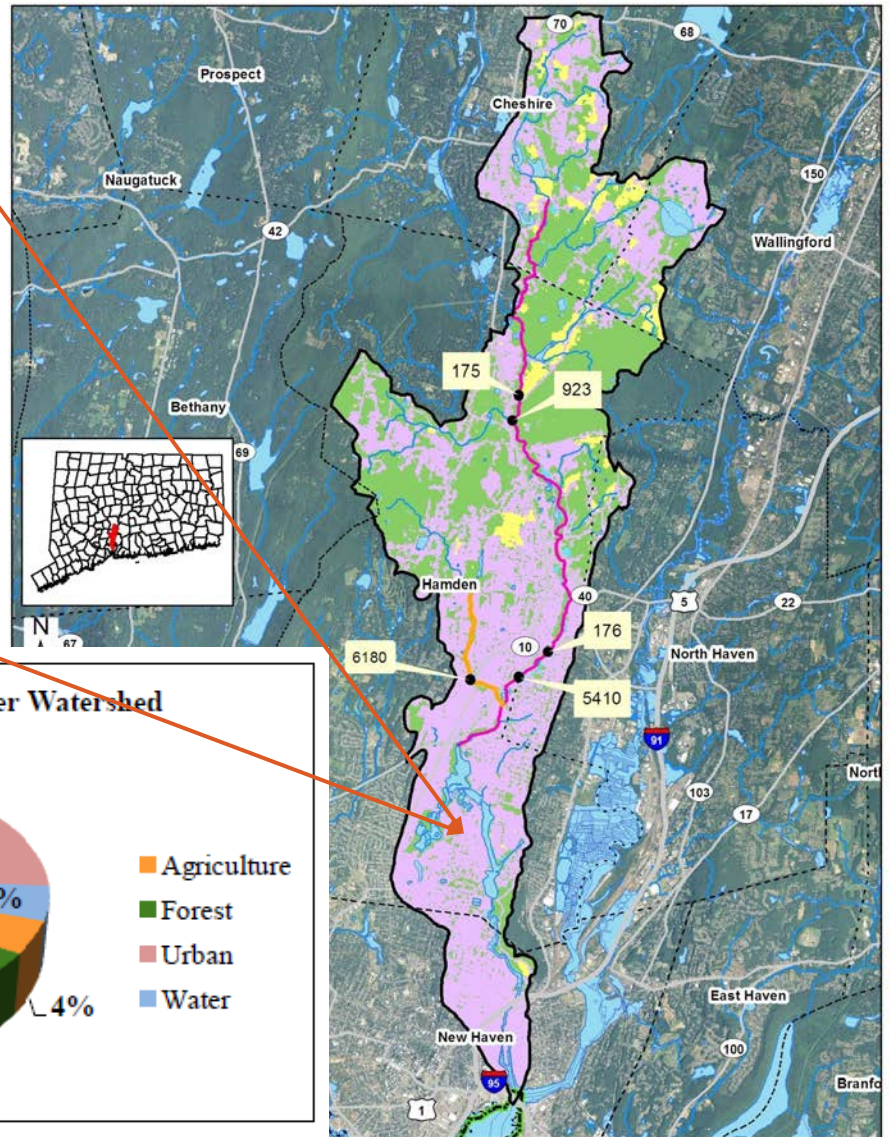
Mill River Watershed Impaired and Non Supporting Segments

Legend

- Mill River Watershed
- Mill River and Tributaries
- Non Supporting Segment
- Impaired Segment



# Land Use



Source: DEEP Mill River Watershed Summary

Land Use In The Mill River Sub Regional Basin

Map Data: CT DEEP Map Created: August 2011



# Water Quality

## Mill River (12 miles)

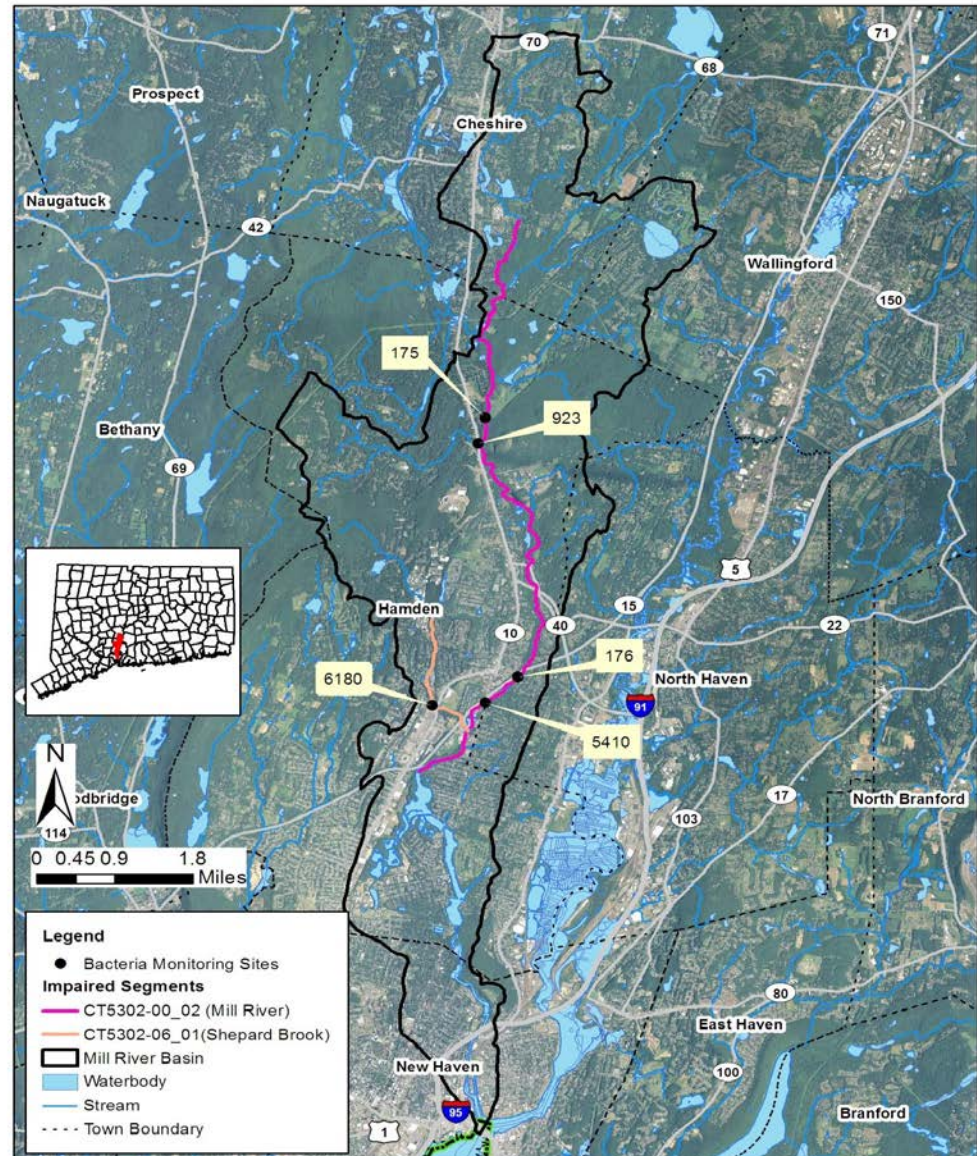
- Aquatic life and recreation impairment
- Elevated bacteria

## Shepards Brook

- Elevated bacteria

## Sources

- Stormwater
- Illicit discharges
- CSOs
- Septic systems
- Wildlife/pets



Bacteria Impairments In The Mill River Sub Regional Basin

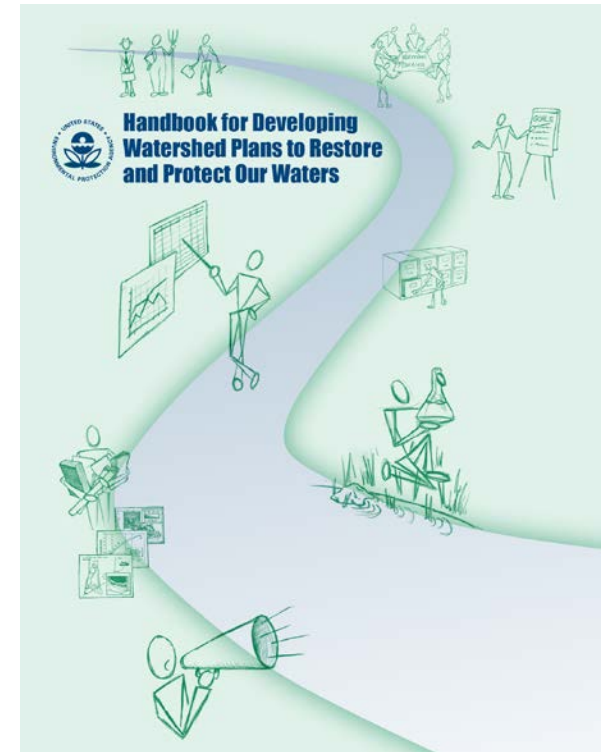
# Watershed Plan Objectives

- Identify existing water quality issues
- Consolidate previous and ongoing efforts under one plan
- Engage watershed municipalities and the public
- Prioritize water bodies and projects to improve and protect water quality
- Ultimately de-list impaired waters – improve water quality



# Watershed Planning – EPA Nine Elements

1. Impairment
2. Load Reduction
3. Management Measures
4. Technical & Financial Assistance
5. Public Information & Education
6. Schedule
7. Milestones
8. Performance Criteria
9. Monitoring



**“Watershed Based Plan”**





# Project Schedule

---

## 1. Project Coordination

- Kickoff Meeting March 1 2018
- Steering Committee Meetings April 2018 & June 2018
- Public Meeting September 2018

## 2. Existing Info. Review & Evaluation

February – March 2018

## 3. LID & Green Infrastructure Assessment

April - June 2018

## 4. Watershed Based Plan Development

June – August 2018

## Final Plan and Celebration

Fall 2018



# Kick Off Meeting

---

## 1. Small Group Discussion

- What is important in the watershed
- What do you want to see in the plan
- What information is available
- Anyone else who should be here

## 2. What's Next?

- Next Steering Committee meeting
- Formation of a coalition
- Watershed questionnaire



---

For Questions or Additional Information contact

[ndavis@savethesound.org](mailto:ndavis@savethesound.org)